

Location



Mipo Station



Address : 947-1, Jung-dong, Haeundae-gu, Busan

Parking : Free of charge for 2 hours
(700 KRW/10min after 2 hours, 21,000 KRW/day)
*Tower type parking (Vans, Electric car, SUVs, and large cars are not allowed)

Public transportation :

From Busan Station → Bus No.1003 and get off at [Mipo/Moontan Road].
10 min on foot from the bus stop.

Gimhae International Airport → Bus No. 307 and get off at [Grand Josun Busan]. 15 min on foot from the bus stop.

Subway → Get off at Line 2 Jung-dong Station. 10 min on foot from Exit 7.



Cheongsapo Station



Address : 116, Cheongsapo-ro, Haeundae-gu, Busan

Parking :
Cheongsapo Public Parking Lot - 554, Jung-dong, Haeundae-gu, Busan
No discounts are provided for Haeundae BlueLine Park visitors. (300 KRW/10min, 8,000 KRW/day)

Public transportation :

Subway → Get off at Line 2 Jangsan Station and take the town shuttle bus No. 2 at exit 5. Get off at [BlueLine Park Station].



Songjeong Station



Address : 427-2, Songjeong-dong, Haeundae-gu, Busan

Parking :
Free of charge for 2 hours (500 KRW/10 min after 2 hours, 15,000 KRW/day)

Public transportation :

Busan Station → Bus No. 1003, 1001, 40

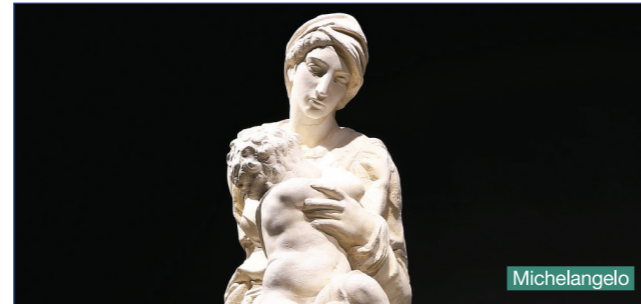
Get off at [Songjeong Beach] and 5 min on foot

Subway → Get off at Donghae Line Songjeong Station / 10 min on foot

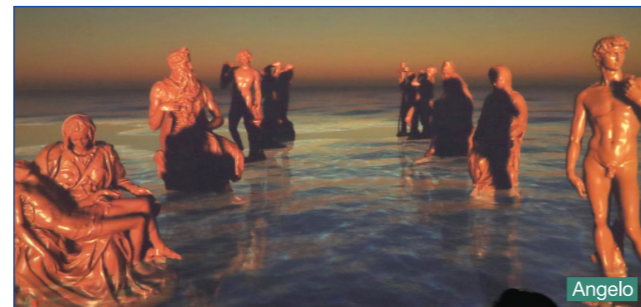
Musee du Bleu Location : Cheongsapo Station 2F



Pablo Picasso



Michelangelo



Angelo

Discover the masterpiece of the century at **Musee du Bleu Gallery&Café**, which is a small version Europe in Korea.

Musee du Bleu Gallery not only exhibits the immortal masterpieces of Michelangelo and Picasso, but also amazing interactive new media artworks that have applied the latest technology.

Take a moment to relish the beautiful landscape of Cheongsapo ocean and railroad at Musee du Bleu Café while enjoying a fragrant cup of tea inside small Europe in Korea.

Fares

Beach Train

	Pass for a ride	Pass for two rides	Pass for all stops
Full Charge	7,000	12,000	16,000

* Mipo Station and Songjeong Station are the last stops where all passengers must get off (Getting off at the last stop counts as a single ride.)

* For the round-trip, you need to purchase the pass for two rides or pass for all stops.

* Pass for all stops can be used for all stations (total of six stations / Boarding at the same station twice is not allowed.)

Sky Capsule

	2 Persons	3 Persons	4 Persons
One way trip	35,000	45,000	50,000

* When any of the users want to take round trips, they need to purchase an additional one-way ticket or use the Haeundae Beach Train.

Package rate

Sky Capsule(One way Trip) + Beach Train(Pass for all stops)

	2 Persons	3 Persons	4 Persons
Sky Capsule (One way Trip)			
+ Beach Train (Pass for all stops)	67,000	93,000	114,000
	59,000	78,000	94,000

* Free of charge for infants under 36 months old

* Double discounts are not provided to the package promotion as they are already applied with the discounted prices

Operating hours

Open all year around -

Ticket issuance until 30 minutes before the facility closes

※ Winter (Nov~Feb) Weekdays/Weekends : 09:30~18:30

※ Off-season (Mar~Apr) Weekdays/Weekends : 09:30~19:00

※ Peak season (May~Jun/Sep~Oct) Weekdays/Weekends : 09:30~20:00

※ Extreme Peak season (Jul~Aug) Weekdays/Weekends : 09:30~21:00

· The operating hours are subject to change depending on the circumstances.



Website

Haeundae BlueLine Park



www.bluelinepark.com



Haeundae Blueline Park

Don't miss these two amazing attractions that you must experience in Busan!
Fill your memories with marvelous landscape and lots of fun!

Beach Train



A romantic experience from riding along accompanied by a breathtaking view of Haeundae Beach

Haeundae Beach Train is a special train for tourists that travels through Haeundae Mipo, Cheongsapo and Songjeong while providing the finest coastal view of East Busan.

Sky Capsule



Our own private space 10m up in the air

Haeundae Sky Capsule provides the seascape of Haeundae from an aerial tram that runs 10m up in the air. Make a special memory with your friends and family inside the sky capsule that provides the private boarding of your party. Enjoy the most relaxing moments by relishing a magnificent ocean view.



Recommended Courses



Course overview

Sky Capsule Mipo-Cheongsapo / Approx. 30min (One-way)

○ : Simple Station ● : Ticket office



Beach Train Mipo-Songjeong / Approx. 25min (One-way) Total 4.5km



Beach Train Timetable



Stations



Mipo



Located at the end of the east side of Haeundae Beach which offers the wonderful view of Gwangandaegyo Bridge and Igidae Cliff, it is considered to be an essential place to visit among most tourists due to its great accessibility to the main street of Haeundae.



Dalmaji Tunnel



The Haewoljeong coastal waters of Dalmaji Pass is on the border of the East Sea and South Sea. The tunnel painted with colorful shades is a lovely place for taking pictures, and walking along the trail at night also offers a special experience for many tourists due to its amazing night view.



Cheongsapo



No one in the world would ever forget the terrific sunrise of Cheongsapo Beach once they see it. Besides, the moon rising at Cheongsapo in the early evening is one of the eight scenic views in Busan that you must experience. It is also highly recommended to visit the Twin Lighthouses when in Cheongsapo as they are recently trending tourist attractions.



Daritdol Skywalk



The skywalk is designed in a streamlined shape to represent the blue dragon, which is known to be the guardian of Cheongsapo village. Have thrilling moments by walking on the glass floor as if you're flying over the sea.



Gudeokpo

Widely famous for its beautiful reeds and rocks in fantastic shapes, Gudeokpo is also full of unique restaurants and cafes where you can make great memories while enjoying an ocean view.



Songjeong



One of the three major beaches that represent Busan, Songjeong Beach has a shallow water level and gentle slope which make it especially popular for groups of family visitors. Besides, it has recently been highlighted as a perfect place for surfing, thus attracting lots of surfers throughout the year.